



Rubber Technology

Rubber Consultants has the capability to develop formulations and processes for tyre retreading, injection moulding, extrusion, calendering and compression moulding and assessment of rubber flow using the equipment in a modern mill-room.

Extensive facilities include:

- A range of mixers and mills
- Extruders
- Twin barrel capillary rheometer
- Presses
- Calenders
- Injection moulding machine
- Autoclave

Separate areas are available for mixing black and coloured compounds and for processing thermoplastic elastomers (TPEs), including a plastic injection moulding machine, extruders capable of co-extrusion and mixing in a 24mm twin-screw extruder.

Rubber Consultants' technologists have expertise in a wide range of polymers from NR to silicone and fluoroelastomers.

Rubber Consultants can develop formulations to meet international standards or customers needs and carry out small-scale specialised customer compounding.

For further information please contact:

Dr Marina Fernando mfernando@rubberconsultants.com +44 (0)1992 554657 ext 2083

Graham Bennett gbennett@rubberconsultants.com +44 (0)1992 554657 ext 2062

Prototype Design & Manufacturing

Rubber Consultants can produce parts if required from one offs, prototypes to small production runs all manufactured under the quality umbrella of ISO 9001:2000.

The facilities on offer to clients include:

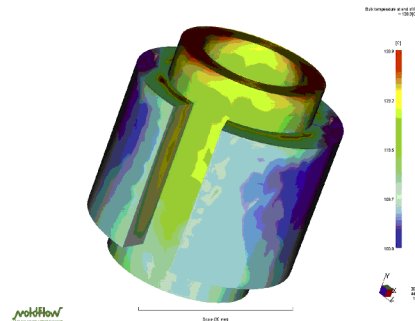
- Millroom mixing
- Rubber compound testing together with advice on compound selection, fabrication and tool design

Rubber Consultants has experience in working with the aerospace industry both in Europe and the USA.

For further information please contact:

Dr Marina Fernando mfernando@rubberconsultants.com +44 (0)1992 554657 ext 2083

Dr Alan Muhr amuhr@rubberconsultants.com +44 (0)1992 554657 ext 2082



Moldflow Simulation

Advanced manufacturing relies heavily on the use of simulation codes to optimise part and mould design. Flow simulation software allows a component manufacturer to identify potential problems in advance and implement any necessary corrections, thus minimising the time to market a product. The use of these cost effective technologies is becoming popular as it allows a product manufacturer to remain competitive in the global market.

Rubber Consultants uses Moldflow 2D/3D hybrid and full 3D flow analysis software to analyse injection moulded rubber parts with different thickness ranging from thick to thin.

This mould optimisation software is part of Rubber Consultants' total Engineering Design service. Companies involved in the manufacture of injection moulded rubber components could benefit from this service as the advantages of using simulation codes for optimum 'manufacturability' are brought directly to the product designers.

For further information please contact:

Dr Marina Fernando mfernando@rubberconsultants.com +44 (0)1992 554657 ext 2083

Rubber
Consultants

Rubber Consultants, Brickendonbury, Hertford, SG13 8NL, UK
www.rubberconsultants.com e-mail: info@rubberconsultants.com
tel: +44 (0)1992 554657 fax: +44 (0)1992 504248